

LINKING GAZE STABILIZATION, VOR, & CEREBELLUM

The Eye Muscle & Eye Movement Rules:

Eye Muscles That Obey Their Names

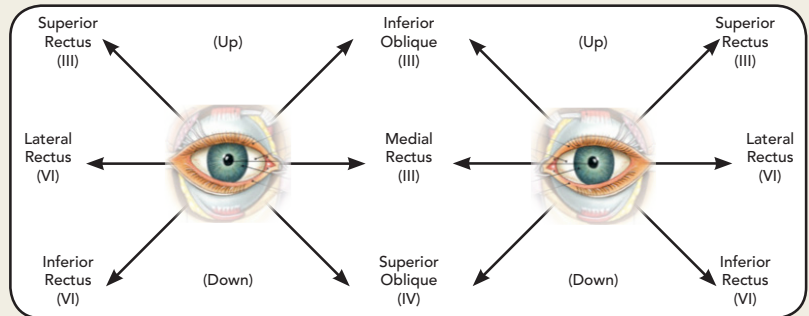
- Superior Rectus (Pulls Eye Up & Out)
- Inferior Rectus (Pulls Eye Down & Out)
- Medial Rectus (Pulls Eye Medially)
- Lateral Rectus (Pulls Eye Laterally)

Eye Muscles That DO NOT Obey Names

- Inferior Oblique (Pulls Eye Up & In)
- Superior Oblique (Pulls Eye Down & In)

Mechanical Advantage in Movement

- When the eyes are ABDUCTED, the RECTUS muscles have mechanical advantage
- When the eyes are ADDUCTED, the OBLIQUE muscles have mechanical advantage

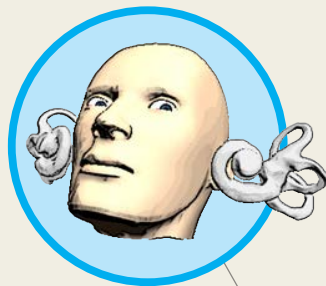


The Extraocular Muscle → Cerebellum Connection Rules:

1. Muscles that are named SUPERIORLY are controlled by the IPSILATERAL cerebellum
2. Muscles that are named INFERIORLY are controlled by the CONTRALATERAL cerebellum

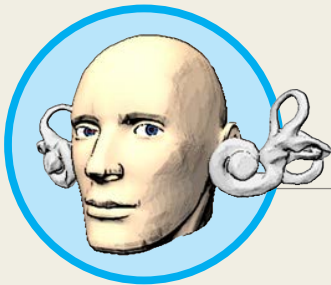
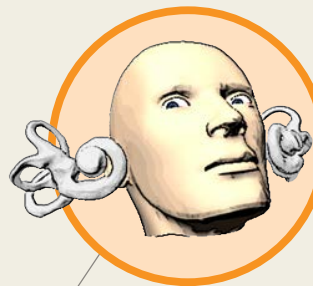
Head Up & Right

- R. Posterior Canal
- Eyes Down & Left
- (L Inf Rec, R Sup Obl)
- **R Cerebellum**



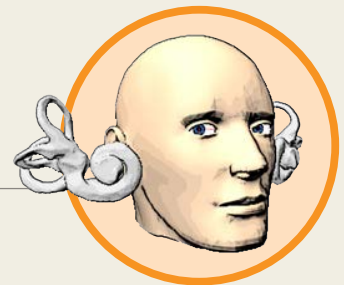
Head Up & Left

- L. Posterior Canal
- Eyes Down & Right
- (R Inf Rec, L Sup Obl)
- **L Cerebellum**



Head Right Rotation

- R. Horizontal Canal
- Eyes Left
- (R Med Rec, L Lat Rec)
- **R Cerebellum**

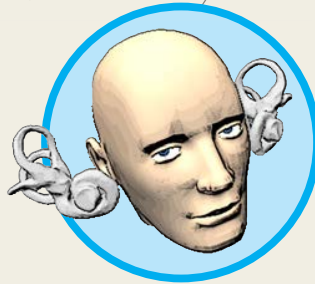


Head Left Rotation

- L. Horizontal Canal
- Eyes Right
- (R Lat Rec, L Med Rec)
- **L Cerebellum**

Head Down & Left

- R. Anterior Canal
- Eyes Up & Right
- (R Sup Rec, L Inf Obl)
- **R Cerebellum**



Head Down & Right

- L. Anterior Canal
- Eyes Up & Left
- (R Inf Obl, L Sup Rec)
- **L Cerebellum**

